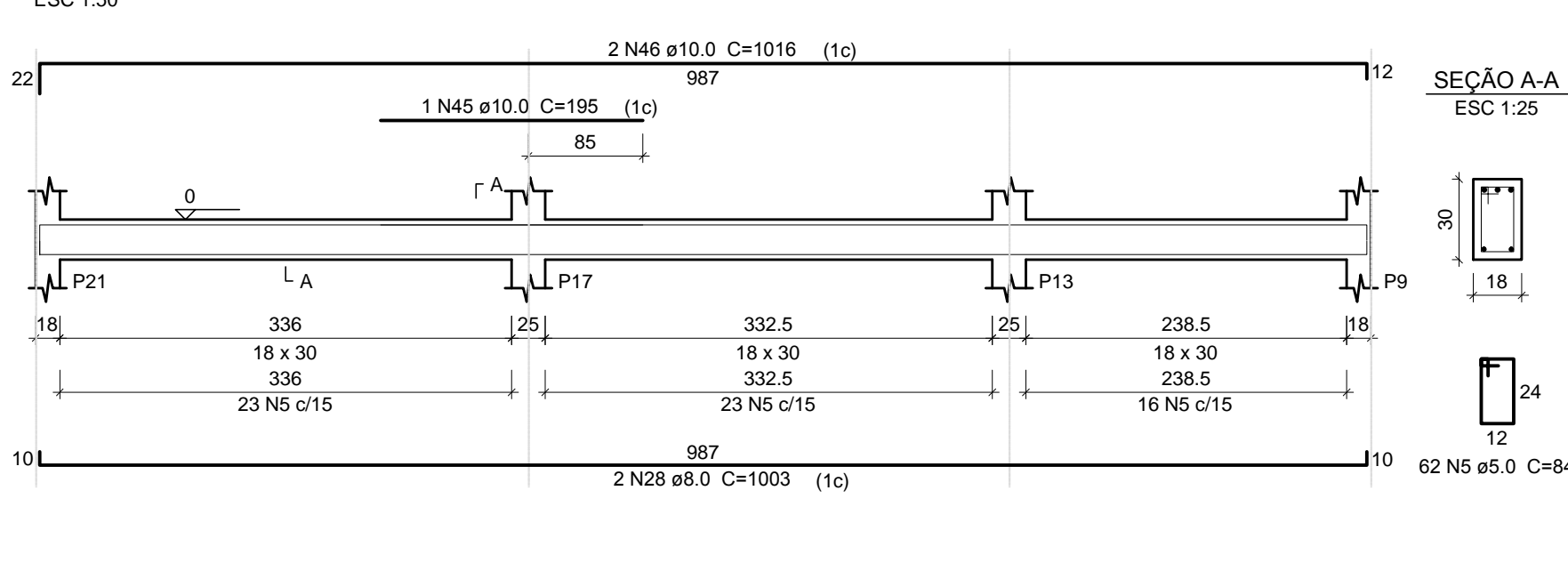
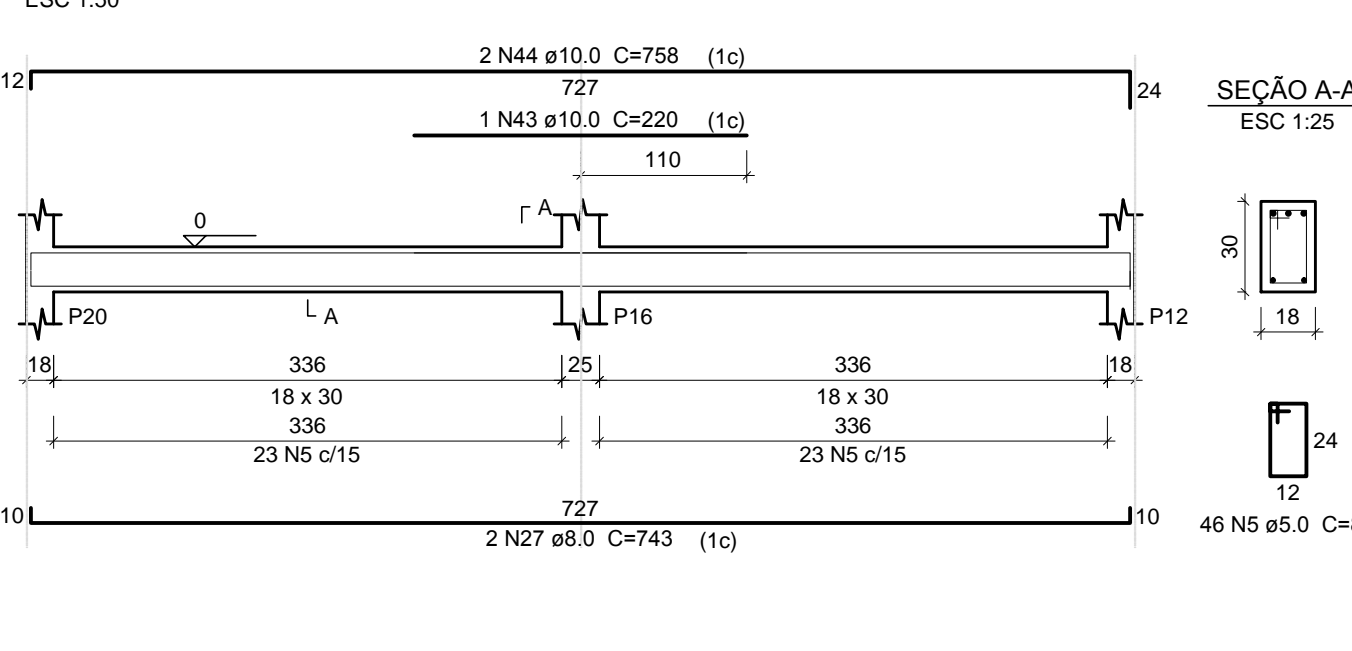
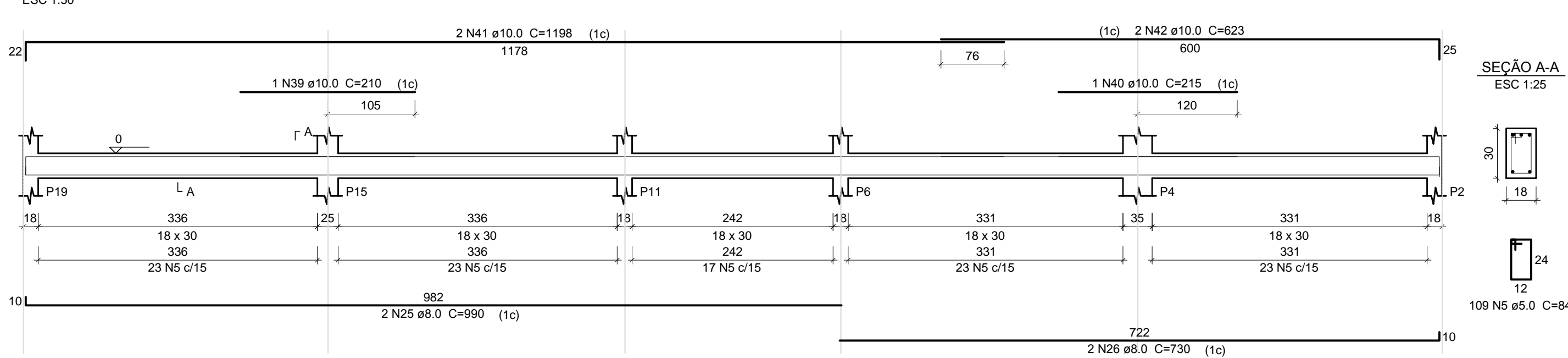
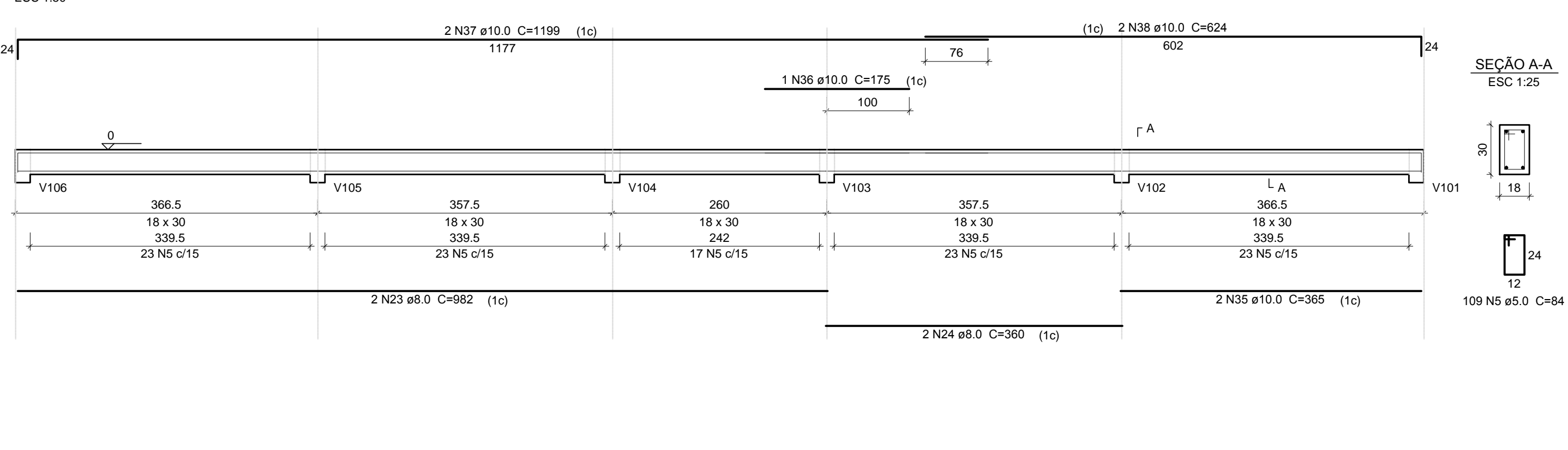
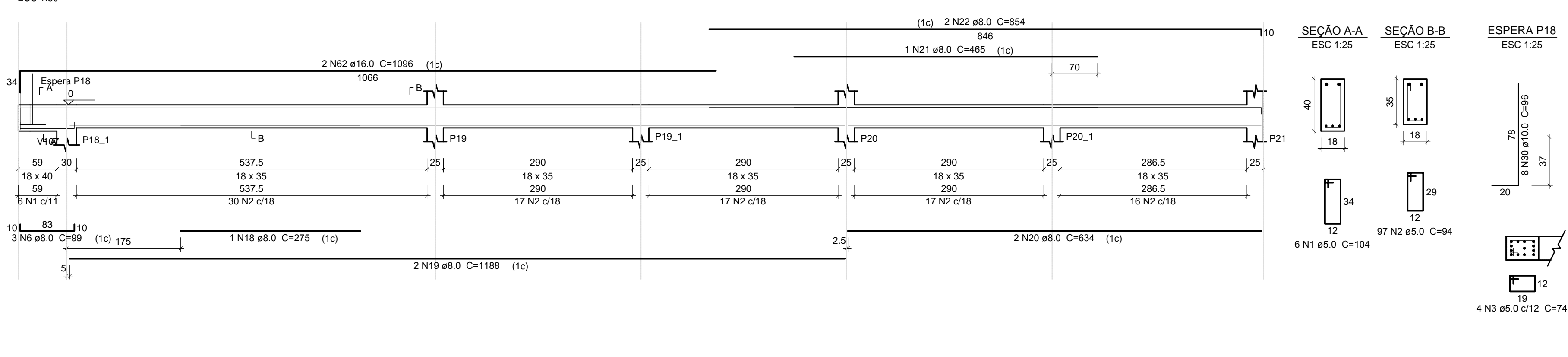


Volume de concreto ($f_{ck}=25\text{MPa}$) = 8.44 m³
Área de forma = 119.12 m²



Relação do aço						
V101	V102	V103				
V104	V105	V106				
V107	V108	V109				
V110						
AÇO	N	DIAM (mm)	QUANT	C.LUNIT (cm)	C.TOTAL (cm)	
CA50	1	5.0	42	104	5408	
	2	5.0	56	94	43334	
	3	5.0	20	77	1480	
	4	5.0	2	174	352	
	5	5.0	326	84	27384	
CA50	6	8.0	12	99	1188	
	7	8.0	3	94	282	
	8	8.0	2	805	1610	
	9	8.0	1	247	247	
	10	8.0	2	454	908	
	11	8.0	3	148	444	
	12	8.0	2	938	1876	
	13	8.0	1	319	638	
	14	8.0	3	97	291	
	15	8.0	2	982	1984	
	16	8.0	1	112	112	
	17	8.0	2	1162	2324	
	18	8.0	1	275	275	
	19	8.0	2	1188	2376	
	20	8.0	2	654	1298	
	21	8.0	1	465	465	
	22	8.0	2	864	1708	
	23	8.0	2	982	1964	
	24	8.0	2	360	720	
	25	8.0	2	990	1980	
26	8.0	2	730	1460		
27	8.0	2	1498	2996		
28	8.0	2	1003	2006		
29	10.0	2	566	1132		
30	10.0	16	96	1536		
31	10.0	1	255	255		
32	10.0	2	558	1116		
33	10.0	2	555	1110		
34	10.0	2	1099	2198		
35	10.0	3	365	730		
36	10.0	1	175	175		
37	10.0	2	1199	2398		
38	10.0	2	624	1248		
39	10.0	1	210	210		
40	10.0	1	215	215		
41	10.0	2	688	1376		
42	10.0	2	1193	2386		
43	10.0	2	220	440		
44	10.0	2	758	1516		
45	10.0	1	185	185		
46	10.0	2	1016	2032		
47	12.5	2	581	1162		
48	12.5	25	104	2600		
49	12.5	1	173	173		
50	12.5	2	1776	3552		
51	16.0	2	281	522		
52	16.0	2	687	1374		
53	16.0	1	202	202		
54	16.0	1	251	251		
55	16.0	2	698	1396		
56	16.0	2	271	542		
57	16.0	2	1197	2394		
58	16.0	2	1098	2196		
59	16.0	2	866	1732		
60	16.0	17	116	1972		
61	16.0	2	801	1602		
62	16.0	2	1098	2196		